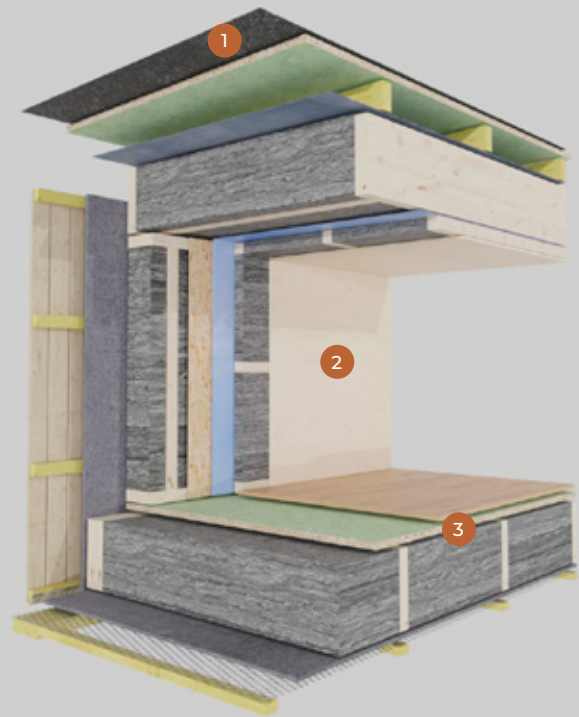


## TECHNICAL DATA



- 1
  - Interior finishing board 9-12 mm
  - Mineral wool 45 mm
  - PVC vapor barrier film
  - Calibrated timber frame
  - Mineral wool 195/245 mm
  - Diffusion membrane
  - Air gap
  - Moisture-resistant Lignum board 18 mm
  - Bitumen torch-on roofing felt, 2 layers

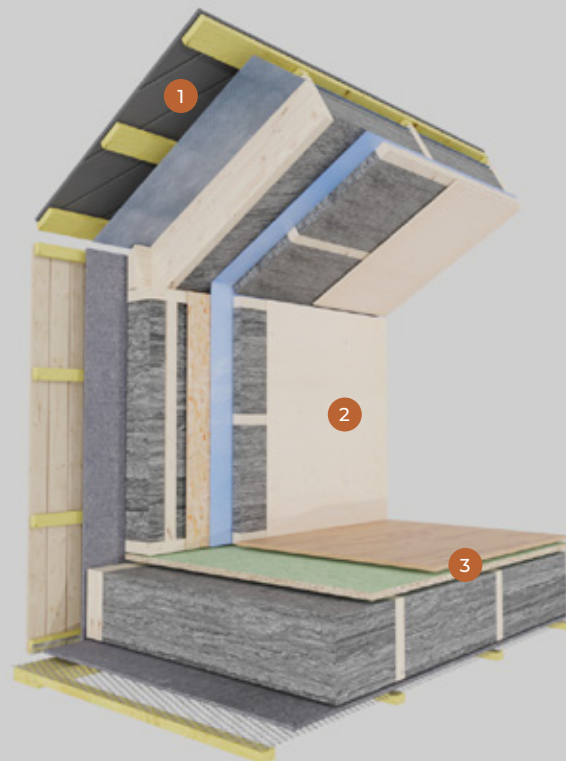
- 2
  - Interior finishing board 9-12 mm
  - Mineral wool 45 mm
  - OSB board 12 mm
  - Calibrated timber frame
  - PVC vapor barrier film
  - Mineral wool 95/145/195/245 mm
  - Wind barrier board Hunton 12 mm
  - Steel protection against rodents
  - Air gap
  - Facade cladding – timber / profiled steel

- 3
  - Floor covering
  - Moisture-resistant Lignum board 22 mm
  - Mineral wool 195/245 mm
  - Calibrated timber frame
  - Wind barrier board Hunton 12 mm
  - Steel mesh against rodents

- 1
  - Interior finishing board 9-12 mm
  - Mineral wool 45 mm
  - PVC vapor barrier film
  - Calibrated timber frame
  - Mineral wool 145/195 mm
  - Diffusion membrane
  - Air gap
  - Roof cladding – profiled steel

- 2
  - Interior finishing board 9-12 mm
  - Mineral wool 45 mm
  - OSB board 12 mm
  - Calibrated timber frame
  - PVC vapor barrier film
  - Mineral wool 95/145/195/245 mm
  - Wind barrier board Hunton 12 mm
  - Steel protection against rodents
  - Air gap
  - Facade cladding – timber / profiled steel

- 3
  - Floor covering
  - Moisture-resistant Lignum board 22 mm
  - Mineral wool 195/245 mm
  - Calibrated timber frame
  - Wind barrier board Hunton 12 mm
  - Steel mesh against rodents



REST MODULES is a Lithuanian manufacture of modular homes

Every project is unique – from layout and equipment to finishes and comfort details, suited to each client's needs

Built for year-round living with high-quality, EU-certified materials and solutions, our cabins offer excellent insulation and durable construction for comfort in all weather conditions


Combining Scandinavian-inspired design with Lithuanian precision, we deliver energy-efficient, modern, and long-lasting modular homes for Northern climates.



REST  
MODULES

 restmodules.lt

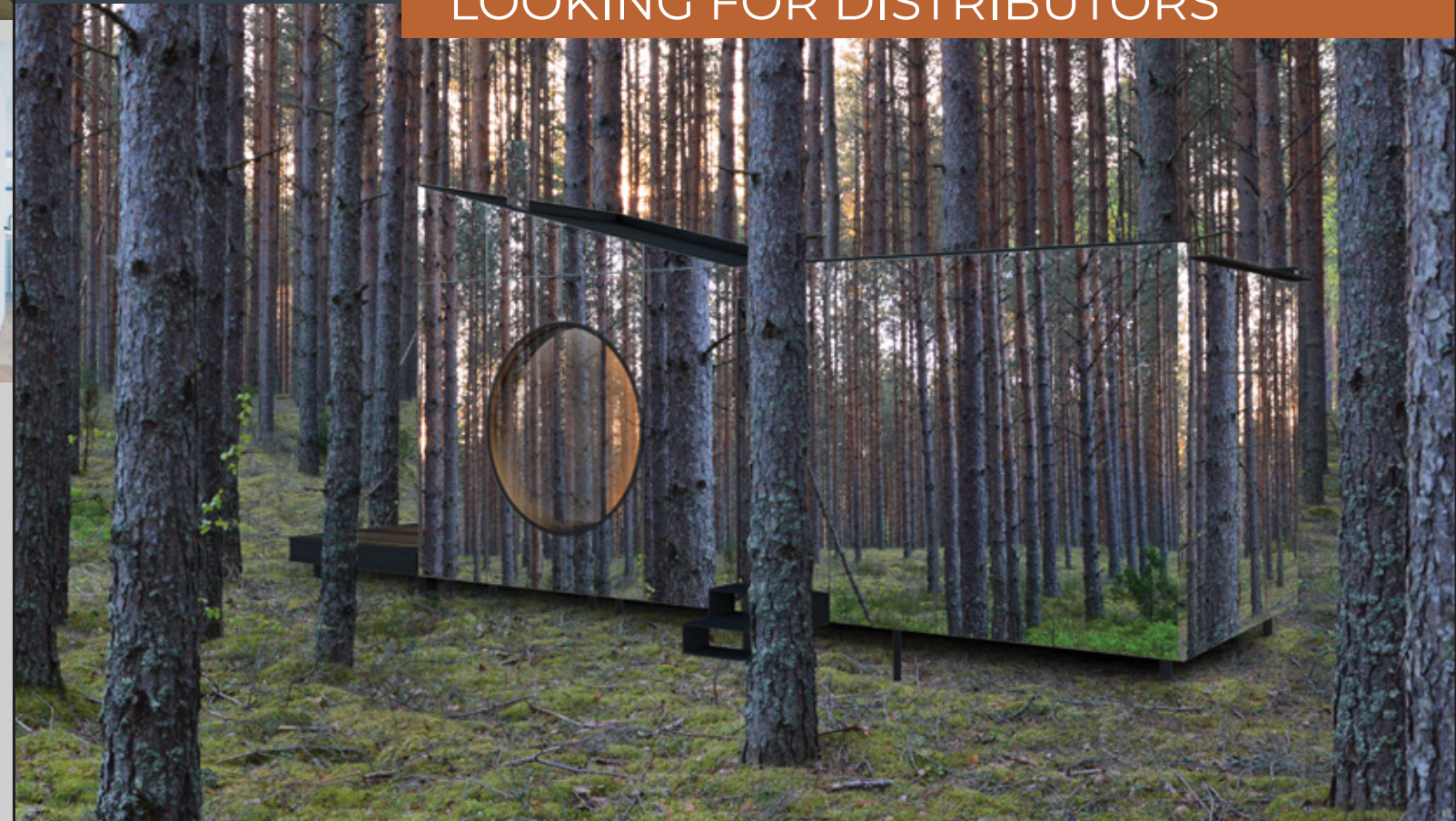
 info@restmodules.lt

 +370 677 99355



REST  
MODULES

LOOKING FOR DISTRIBUTORS





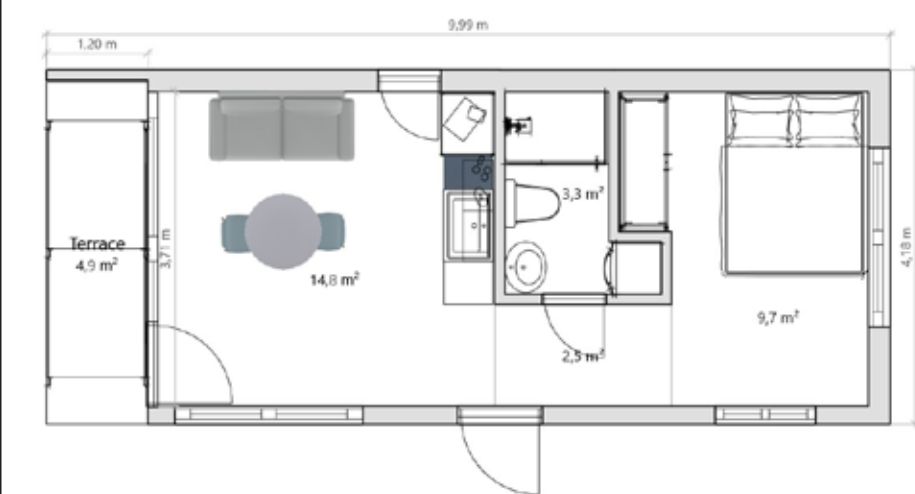
● PINE CONE



● KOMMODE



● RHINO



Dimensions:

L - 9.9 m

B - 4.2 m

H - 3.9 m

41.6 m²/28.2m²+4.8m² terrace

Dimensions can be adjusted according to needs

WC / shower

Living room + kitchen

Bedroom

Terrace



Dimensions:

A modern two-module modular house with two bedrooms

Dimensions (2 modules):

L - 7.8m

B - 4m

H - 3,5m

63,8m² / 50m²

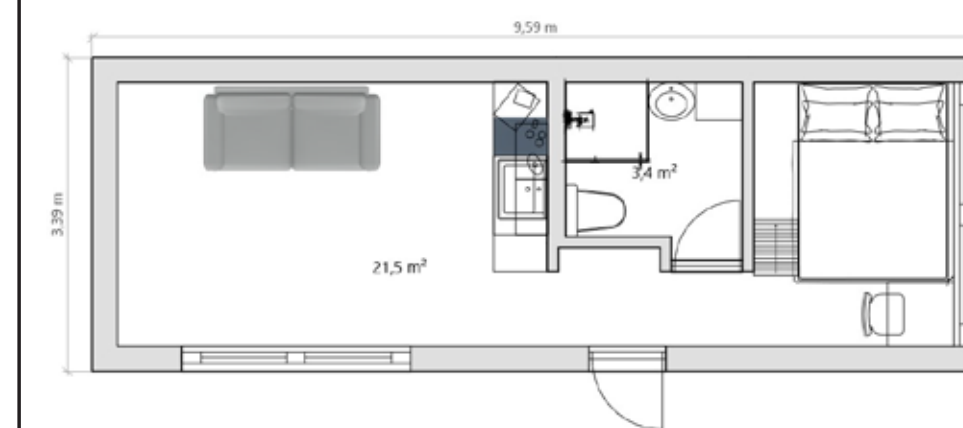
WC / shower

Living room + 2 bedrooms

Kitchen

Terrace additionally

Dimensions and number of modules can be adjusted according to needs.



Dimensions:

L-9,65m

B-3,42m

H-3,6/4,8m

33m² / 26m²

Dimensions can be adjusted according to needs

WC / shower

Living room + kitchen

Bedroom

